



**Water Monitoring Result at M5B - Central Cooling Water Intake Group
Mid-Flood Tide**

Date	Time	Weather Condition	Sampling Depth		Water Temperature			pH			Salinity		DO Saturation		DO		Turbidity		Suspended Solids					
					°C			-			ppt		%		mg/L		NTU		mg/L					
			m	Value	Average	Value	Average	Value	Average	Value	Average	Value	Average	Value	Average	Value	Average	Value	Average	Value	Average			
3/4/17	11:05	Fine	Middle	3.5	20.20	20.20	20.25	8.20	8.20	8.21	31.80	31.80	31.80	95.7	95.9	95.6	7.18	7.19	7.17	4.96	4.94	4.92	3	3.00
	11:07		Middle	3.5	20.30	20.30		8.22	8.22		31.79	31.79		95.3	95.3		7.15	7.15		4.90	4.87		3	
5/4/17	10:45	Fine	Middle	3.5	21.40	21.40	21.45	8.14	8.14	8.16	31.98	31.98	31.98	98.4	97.4	97.5	7.22	7.14	7.15	3.02	3.00	3.03	<2	<2
	10:47		Middle	3.5	21.50	21.50		8.17	8.17		31.97	31.97		97.3	96.7		7.13	7.09		3.02	3.09		<2	
8/4/17	16:15	Fine	Middle	3.5	22.70	22.70	22.85	8.20	8.20	8.22	31.39	31.39	31.39	96.0	95.4	95.4	6.89	6.85	6.85	2.58	2.58	2.58	6	5.50
	16:17		Middle	3.5	23.00	23.00		8.23	8.23		31.39	31.39		95.5	94.8		6.85	6.79		2.58	2.59		5	
10/4/17	17:45	Cloudy	Middle	3.5	22.80	22.80	23.00	8.03	8.03	8.11	30.88	30.88	30.87	96.0	95.6	95.2	6.86	6.85	6.81	3.50	3.42	3.43	4	3.50
	17:47		Middle	3.5	23.20	23.20		8.18	8.18		30.86	30.86		95.0	94.0		6.81	6.73		3.40	3.39		3	
12/4/17	19:34	Cloudy	Middle	3.0	21.30	21.30	21.35	8.16	8.16	8.17	31.55	31.55	31.55	80.4	81.5	80.8	5.91	5.99	5.93	3.50	3.64	3.61	3	3.00
	19:35		Middle	3.0	21.40	21.40		8.18	8.18		31.55	31.55		81.1	80.0		5.95	5.87		3.66	3.62		3	
14/4/17	7:42	Cloudy	Middle	3.5	21.90	21.90	21.90	8.21	8.21	8.21	32.18	32.18	32.19	75.0	75.1	75.7	5.45	5.45	5.50	4.71	4.44	4.54	4	4.00
	7:43		Middle	3.5	21.90	21.90		8.21	8.21		32.19	32.19		76.8	75.8		5.58	5.51		4.52	4.50		4	
18/4/17	9:05	Fine	Middle	4.0	23.70	23.70	23.80	8.10	8.10	8.12	31.38	31.38	31.38	90.6	91.0	90.6	6.39	6.42	6.39	2.77	2.71	2.76	3	4.00
	9:07		Middle	4.0	23.90	23.90		8.14	8.14		31.38	31.38		90.5	90.3		6.38	6.37		2.77	2.79		5	
20/4/17	5:45	Cloudy	Middle	3.0	26.80	26.80	26.80	8.07	8.07	8.08	31.61	31.61	31.61	76.4	76.9	77.0	5.11	5.15	5.15	3.51	3.10	3.29	<2	<2
	5:46		Middle	3.0	26.80	26.80		8.09	8.09		31.61	31.61		77.4	77.3		5.18	5.17		3.29	3.27		<2	
22/4/17	14:05	Cloudy	Middle	3.5	22.80	22.80	22.75	8.33	8.33	8.34	30.90	30.90	30.91	89.3	89.6	89.5	6.44	6.46	6.46	2.92	3.00	3.00	3	3.00
	14:07		Middle	3.5	22.70	22.70		8.34	8.34		30.91	30.91		89.6	89.6		6.47	6.47		3.03	3.04		3	
24/4/17	16:15	Fine	Middle	3.5	22.40	22.40	22.40	8.25	8.25	8.26	31.85	31.85	31.86	90.1	90.5	89.7	6.51	6.53	6.48	4.63	4.65	4.61	4	5.00
	16:17		Middle	3.5	22.40	22.40		8.26	8.26		31.86	31.86		90.0	88.1		6.50	6.36		4.64	4.51		6	
26/4/17	19:50	Cloudy	Middle	3.5	23.10	23.10	23.05	8.14	8.14	8.15	31.88	31.88	31.89	81.2	81.5	81.3	5.79	5.81	5.79	8.31	8.33	8.23	7	6.50
	19:51		Middle	3.5	23.00	23.00		8.16	8.16		31.89	31.89		81.4	81.0		5.80	5.77		8.13	8.15		6	
28/4/17	20:55	Cloudy	Middle	3.0	22.30	22.30	22.30	8.19	8.19	8.20	31.62	31.62	31.63	80.3	79.5	79.4	5.10	5.75	5.62	6.96	6.90	6.88	6	6.00
	20:56		Middle	3.0	22.30	22.30		8.21	8.21		31.64	31.64		79.3	78.5		5.74	5.87		6.87	6.77		6	

Remarks:
Single underline denotes exceedance over Action Level.
Double underline denotes exceedance over Limit Level.



**Water Monitoring Result at Culvert J - Reference Station
Mid-Flood Tide**

Date	Time	Weather Condition	Sampling Depth		Water Temperature			pH			Salinity		DO Saturation		DO		Turbidity		Suspended Solids					
					°C			-			ppt		%		mg/L		NTU		mg/L					
					Value	Average		Value	Average		Value	Average	Value	Average	Value	Average	Value	Average	Value	Average				
3/4/17	11:00	Fine	Middle	3.5	20.10	20.10	20.15	8.16	8.16	8.17	31.38	31.38	31.38	91.8	91.5	91.3	6.92	6.90	6.88	5.20	5.24	5.24	3	2.50
	11:02		Middle	3.5	20.20	20.20		8.18	8.18		31.37	31.37		91.3	90.6		6.87	6.82		5.26	5.25		2	
5/4/17	10:50	Fine	Middle	3.5	21.10	21.10	21.20	8.18	8.18	8.19	31.92	31.92	31.95	95.9	96.2	96.0	7.06	7.09	7.07	2.68	2.71	2.72	2	2.00
	10:52		Middle	3.5	21.30	21.30		8.20	8.20		31.97	31.97		96.2	95.7		7.09	7.04		2.74	2.76		<2	
8/4/17	16:10	Fine	Middle	3.5	23.20	23.20	23.45	8.13	8.13	8.16	31.33	31.33	31.32	97.3	97.0	96.7	6.90	6.88	6.86	2.58	2.58	2.61	3	4.00
	16:12		Middle	3.5	23.70	23.70		8.19	8.19		31.30	31.30		96.4	96.0		6.84	6.80		2.63	2.63		5	
10/4/17	17:50	Cloudy	Middle	3.5	23.30	23.30	23.35	8.21	8.21	8.21	30.00	30.00	30.01	84.8	84.5	84.7	6.11	6.09	5.85	6.98	6.89	6.94	5	6.00
	17:52		Middle	3.5	23.40	23.40		8.20	8.20		30.01	30.01		84.3	85.0		6.07	5.12		6.93	6.95		7	
12/4/17	19:42	Cloudy	Middle	3.0	21.40	21.40	21.45	8.29	8.29	8.28	24.97	24.97	24.95	67.5	68.7	67.8	5.16	5.24	5.18	10.64	10.62	10.62	6	7.00
	19:43		Middle	3.0	21.50	21.50		8.26	8.26		24.93	24.93		67.7	67.2		5.17	5.13		10.60	10.60		8	
14/4/17	7:56	Cloudy	Middle	3.0	22.00	22.00	21.95	8.22	8.22	8.21	29.40	29.40	29.41	65.1	65.5	65.3	4.81	4.83	4.82	7.08	6.97	7.08	5	5.00
	7:57		Middle	3.0	21.90	21.90		8.20	8.20		29.42	29.42		65.6	65.0		4.84	4.79		7.17	7.10		5	
18/4/17	9:00	Fine	Middle	3.5	24.10	24.10	24.20	8.07	8.07	8.07	29.59	29.59	29.59	81.7	81.6	81.2	5.79	5.78	5.75	4.83	4.83	4.78	6	5.50
	9:02		Middle	3.5	24.30	24.30		8.07	8.07		29.59	29.59		81.3	80.1		5.75	5.67		4.73	4.73		5	
20/4/17	5:51	Cloudy	Middle	2.5	26.80	26.80	26.80	8.10	8.10	8.08	29.80	29.80	29.80	76.4	77.5	77.4	5.18	5.24	5.24	1.80	1.83	1.84	<2	<2
	5:52		Middle	2.5	26.80	26.80		8.06	8.06		29.80	29.80		78.1	77.6		5.28	5.25		1.87	1.84		<2	
22/4/17	14:00	Cloudy	Middle	3.5	22.70	22.70	22.65	8.24	8.24	8.28	29.79	29.79	29.80	92.6	92.3	91.0	6.74	6.64	6.60	2.95	2.99	2.92	<2	<2
	14:02		Middle	3.5	22.60	22.60		8.32	8.32		29.80	29.80		89.6	89.3		6.52	6.50		2.88	2.87		<2	
24/4/17	16:10	Fine	Middle	3.5	22.30	22.30	22.30	8.21	8.21	8.23	31.87	31.87	31.87	89.0	88.2	88.4	6.43	6.38	6.39	4.61	4.57	4.55	5	4.00
	16:12		Middle	3.5	22.30	22.30		8.24	8.24		31.86	31.86		88.2	88.3		6.37	6.38		4.51	4.49		3	
26/4/17	19:56	Cloudy	Middle	3.0	23.00	23.00	23.00	8.16	8.15	8.15	25.93	25.93	25.93	71.9	72.6	72.0	5.31	5.36	5.32	2.54	2.32	2.42	9	7.50
	19:57		Middle	3.0	23.00	23.00		8.15	8.15		25.93	25.93		71.7	71.7		5.29	5.30		2.40	2.42		6	
28/4/17	21:04	Cloudy	Middle	2.5	22.60	22.60	22.55	8.22	8.22	8.21	29.30	29.30	29.31	60.3	60.7	61.1	4.41	4.43	4.46	9.56	9.31	9.30	7	7.00
	21:05		Middle	2.5	22.50	22.50		8.20	8.20		29.31	29.31		61.4	62.0		4.48	4.53		9.21	9.11		7	



**Water Monitoring Result at M5B - Central Colling Water Intake Group
Mid-Ebb Tide**

Date	Time	Weather Condition	Sampling Depth		Water Temperature		pH			Salinity		DO Saturation		DO		Turbidity		Suspended Solids						
					°C		-			ppt		%		mg/L		NTU		mg/L						
			m	Value	Average	Value	Average	Value	Average	Value	Average	Value	Average	Value	Average	Value	Average	Value	Average					
3/4/17	16:25	Fine	Middle	3.5	20.50	20.50	20.60	8.03	8.03	8.04	31.67	31.67	31.67	94.9	95.8	95.2	7.08	7.14	7.11	3.30	3.31	3.30	<2	<2
	16:27		Middle	3.5	20.70	20.70		8.05	8.05		31.66	31.66		95.3	94.9		7.11	7.09		3.29	3.31			
5/4/17	21:05	Cloudy	Middle	3.5	21.30	21.30	21.35	8.07	8.07	8.08	32.17	32.17	32.16	79.9	82.6	81.2	5.89	6.05	5.96	3.52	3.55	3.56	2	2.00
	21:06		Middle	3.5	21.40	21.40		8.08	8.08		32.15	32.15		81.2	80.9		5.95	5.93		3.58	3.60			
8/4/17	11:25	Fine	Middle	3.5	22.30	22.30	22.40	8.14	8.14	8.16	31.53	31.53	31.53	92.9	92.5	92.6	6.71	6.68	6.68	2.45	2.42	2.41	2	2.00
	11:27		Middle	3.5	22.50	22.50		8.18	8.18		31.53	31.53		92.6	92.4		6.68	6.66		2.41	2.35			
10/4/17	10:05	Cloudy	Middle	3.5	23.20	23.20	23.30	8.04	8.04	8.08	31.64	31.64	31.64	91.5	93.1	93.4	6.51	6.62	6.64	2.34	2.33	2.37	2	2.00
	10:07		Middle	3.5	23.40	23.40		8.12	8.12		31.64	31.64		94.7	94.4		6.73	6.70		2.40	2.40			
12/4/17	12:30	Cloudy	Middle	3.5	22.00	22.00	22.07	8.11	8.11	8.14	31.42	31.42	31.42	94.0	92.9	93.0	6.82	6.77	6.77	4.14	4.13	4.12	5	4.50
	12:32		Middle	3.5	22.10	22.18		8.17	8.17		31.41	31.41		92.8	92.4		6.75	6.72		4.19	4.02			
14/4/17	13:10	Cloudy	Middle	1.5	22.50	22.50	22.50	8.19	8.19	8.19	32.43	32.43	32.43	73.7	73.7	73.2	5.29	5.29	5.26	5.19	5.08	5.08	3	4.50
	13:11		Middle	1.5	22.50	22.50		8.19	8.19		32.43	32.43		71.7	73.8		5.15	5.29		5.03	5.00			
18/4/17	16:25	Fine	Middle	3.5	24.90	24.90	25.10	8.15	8.15	8.17	31.30	31.30	31.29	95.1	95.3	94.8	6.56	6.57	6.53	4.48	4.39	4.52	6	6.00
	16:27		Middle	3.5	25.30	25.30		8.18	8.18		31.28	31.28		94.4	94.2		6.51	6.49		4.61	4.58			
20/4/17	18:40	Fine	Middle	3.5	24.40	24.40	24.45	8.23	8.23	8.25	31.09	31.09	31.09	95.4	95.8	95.4	6.67	6.69	6.66	3.04	3.05	3.05	5	4.00
	18:42		Middle	3.5	24.50	24.50		8.27	8.27		31.09	31.09		95.2	95.1		6.65	6.64		3.05	3.04			
22/4/17	20:52	Cloudy	Middle	3.5	22.80	22.80	22.80	8.28	8.28	8.29	31.09	31.09	31.10	77.8	77.9	77.8	5.80	5.81	5.80	2.80	2.49	2.55	<2	<2
	20:53		Middle	3.5	22.80	22.80		8.29	8.29		31.10	31.10		78.0	77.3		5.82	5.77		2.47	2.45			
24/4/17	10:10	Fine	Middle	3.5	22.40	22.40	22.40	8.10	8.10	8.14	32.24	32.24	32.24	96.0	94.8	94.6	6.91	6.82	6.81	4.91	4.73	4.76	4	5.00
	10:12		Middle	3.5	22.40	22.40		8.17	8.17		32.24	32.24		93.6	94.1		6.74	6.77		4.71	4.67			
26/4/17	12:20	Cloudy	Middle	4.0	24.60	24.60	24.65	8.32	8.32	8.33	31.88	31.88	31.91	94.4	94.7	94.2	6.55	6.57	6.54	3.11	3.13	3.13	4	4.00
	12:22		Middle	4.0	24.70	24.70		8.33	8.33		31.93	31.93		94.0	93.7		6.52	6.50		3.14	3.15			
28/4/17	13:40	Fine	Middle	3.5	23.50	23.50	23.35	8.36	8.36	8.37	31.76	31.76	31.82	96.9	97.0	96.5	6.89	6.90	6.86	3.41	3.54	3.54	5	5.00
	13:42		Middle	3.5	23.20	23.20		8.37	8.37		31.88	31.88		96.4	95.7		6.84	6.80		3.63	3.57			

Remarks:
Single underline denotes exceedance over Action Level.
Double underline denotes exceedance over Limit Level.

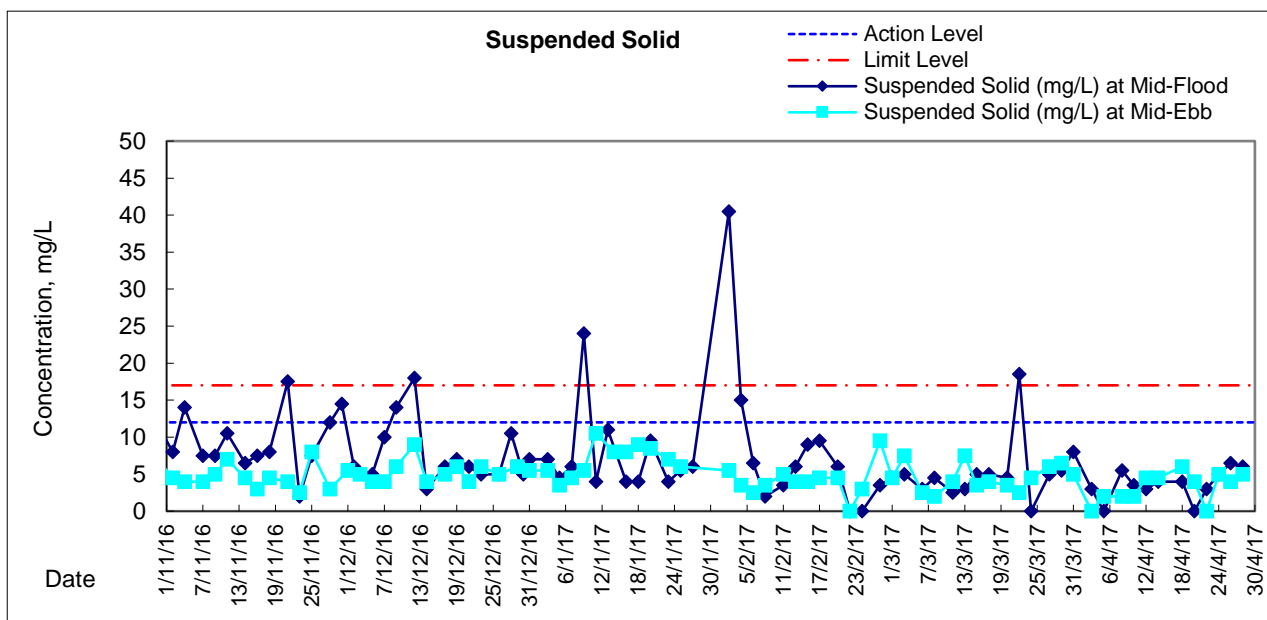
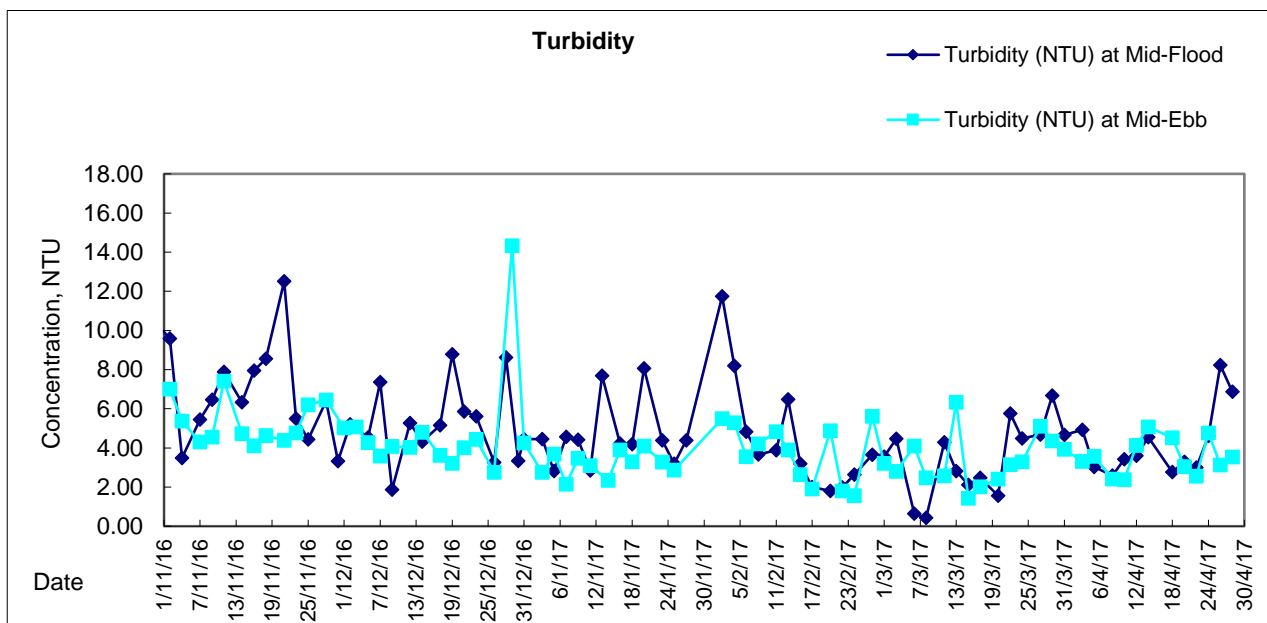
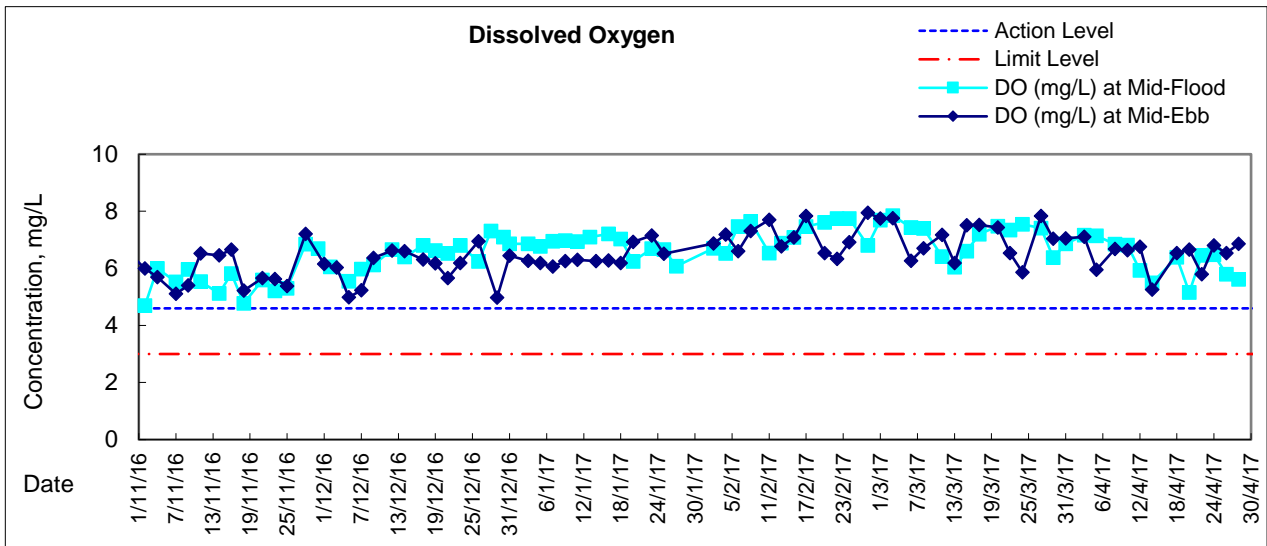


**Water Monitoring Result at Culvert J - Reference Station
Mid-Ebb Tide**

Date	Time	Weather Condition	Sampling Depth		Water Temperature		pH			Salinity		DO Saturation		DO		Turbidity		Suspended Solids						
					°C		-			ppt		%		mg/L		NTU		mg/L						
					Value	Average	Value	Average	Value	Average	Value	Average	Value	Average	Value	Average	Value	Average	Value	Average				
3/4/17	16:20	Fine	Middle	4	21.30	21.30	21.25	8.17	8.17	8.13	25.86	25.86	25.87	78.0	77.1	77.2	5.95	5.89	5.89	5.89	5.88	5.89	3	2.50
	16:22		Middle	4	21.20	21.20		8.09	8.09		25.88	25.88		76.8	76.8		5.86	5.86		5.86	5.91		2	
5/4/17	21:10	Cloudy	Middle	3	21.30	21.30	21.35	8.12	8.12	8.11	26.42	26.42	26.42	53.7	54.2	54.3	4.07	4.10	4.11	14.08	13.71	13.64	6	6.00
	21:11		Middle	3	21.40	21.40		8.10	8.10		26.41	26.41		54.5	54.7		4.13	4.14		13.32	13.44		6	
8/4/17	11:20	Fine	Middle	3	22.90	22.90	23.10	8.12	8.12	8.13	30.13	30.13	30.12	83.1	83.0	83.0	5.97	5.96	5.96	4.12	4.10	4.13	2	2.50
	11:02		Middle	3	23.30	23.30		8.13	8.13		30.11	30.11		82.9	82.9		5.95	5.95		4.10	4.20		3	
10/4/17	10:00	Cloudy	Middle	4	23.80	23.80	24.05	8.05	8.05	8.05	28.63	28.63	28.62	89.7	89.7	89.3	6.40	6.39	6.37	5.71	5.73	5.73	4	4.50
	10:02		Middle	4	24.30	24.30		8.04	8.04		28.61	28.61		89.1	88.8		6.35	6.32		5.73	5.75		5	
12/4/17	12:05	Cloudy	Middle	4	21.70	21.70	21.75	8.19	8.19	8.17	31.21	31.21	31.19	85.4	85.2	85.6	6.26	6.24	6.27	4.07	4.08	4.06	4	3.00
	12:07		Middle	4	21.80	21.80		8.14	8.14		31.17	31.17		86.1	85.6		6.30	6.26		4.07	4.00		2	
14/4/17	13:20	Cloudy	Middle	1	22.50	22.50	22.50	8.22	8.22	8.20	27.66	27.66	27.66	56.6	58.4	58.3	4.18	4.31	4.30	12.43	12.37	12.12	6	5.50
	13:21		Middle	1	22.50	22.50		8.17	8.17		27.65	27.65		59.2	58.9		4.37	4.35		11.78	11.91		5	
18/4/17	16:20	Fine	Middle	4	25.60	25.60	25.85	8.11	8.11	8.13	30.48	30.48	30.47	94.7	94.7	94.1	6.48	6.48	6.43	5.31	5.29	5.26	4	4.00
	16:22		Middle	4	26.10	26.10		8.14	8.14		30.46	30.46		93.6	93.4		6.39	6.38		5.20	5.22		4	
20/4/17	18:45	Fine	Middle	4	24.30	24.30	24.35	8.24	8.24	8.23	28.66	28.66	28.67	74.1	74.1	74.1	5.26	5.26	5.27	5.89	5.92	5.91	5	5.00
	18:47		Middle	4	24.40	24.40		8.22	8.22		28.67	28.67		74.3	74.0		5.28	5.26		5.92	5.91		5	
22/4/17	20:57	Cloudy	Middle	3	22.90	22.90	22.90	8.25	8.25	8.22	28.29	28.29	28.30	78.1	77.8	79.3	5.91	5.89	6.01	8.93	8.45	8.59	<2	5.00
	20:58		Middle	3	22.90	22.90		8.18	8.18		28.30	28.30		80.8	80.6		6.12	6.10		8.52	8.47		5	
24/4/17	10:05	Fine	Middle	4	22.20	22.20	22.20	8.22	8.22	8.23	31.80	31.80	31.80	84.5	84.8	84.6	6.12	6.14	6.13	4.42	4.43	4.43	4	5.00
	10:07		Middle	4	22.20	22.20		8.23	8.23		31.80	31.80		84.6	84.3		6.13	6.11		4.45	4.43		6	
26/4/17	12:15	Cloudy	Middle	4	24.90	24.90	25.05	8.25	8.25	8.28	32.02	32.02	32.01	89.7	90.6	89.7	6.17	6.23	6.17	3.66	3.65	3.65	5	6.00
	12:17		Middle	4	25.20	25.20		8.31	8.31		31.99	31.99		89.7	88.7		6.17	6.10		3.64	3.64		7	
28/4/17	13:35	Fine	Middle	4	23.30	23.30	23.35	8.33	8.33	8.34	31.87	31.87	31.87	89.5	88.6	88.2	6.34	6.27	6.25	4.10	4.00	4.02	5	5.00
	13:37		Middle	4	23.40	23.40		8.35	8.35		31.87	31.87		88.0	86.7		6.24	6.14		3.98	3.99		5	



Graphic Presentation of Water Quality Result of M5B - Central Cooling Water Intake Groups





Graphic Presentation of Water Quality Result of Culvert J - Reference Station

